

# BULLETIN

Editor: Stan Schaffer

## ***June President's Message***

Friends,

Once again you have given me the honor to be elected President of the Congregation. I know all too well my shortcomings in fulfilling the duties of the office and I ask for your patience, constructive criticism and suggestions for improving our shul. If we all work and contribute together in a spirit of cooperation and mutual respect, we can accomplish much for the Congregation.

One very significant accomplishment that we've had over the last year has been the construction and deployment of our website on the world wide web. This was due almost entirely to the efforts of one of our newest members – and now 1<sup>st</sup> Vice-President - Steve Teitel. The web site has been enormously useful to our members for learning about events at shul, and also to the wider community in learning about our congregation. We have had many compliments from near and far about the web page. Thanks from all of us to Steve!

We have good turnouts at services throughout the year including Shabbat, High Holidays, and the festivals. The major exception has been Friday evening Kabbalat Shabbat services where attendance has been low. I ask all of our members to please treat yourselves to this relatively brief and touching service – where singing and reading beautiful Psalms are the centerpiece of the worship.

We also should remember and thank those that do so much for our shul - Leon Metlay, Ira Cohen, Dave Rogachefsky, Jeff Nidetz, Art Mercer, Steve Teitel, Stan Schaffer, Janet Grable, Aline Honickman, Dianne Hooker, Chris Paprocki, and those who help with the kiddushim, the holiday meals, and the annual picnic.

Let's all wish our caretaker, Yacob Deng, all the best in his search for information about the fate of his mother and family in eastern Africa when he travels to Australia.

Please let me and the other officers and trustees know your thoughts on the best way to address the increasing costs facing the congregation. Please also invite friends and acquaintances to services.

Remember, Shavuot starts on Thursday evening on the 1<sup>st</sup> of June with services at 8 pm. We also have services Friday and Saturday morning at 9 am. Please join us.

See you all at shul,

*Harris Honickman*

## BHBI CALENDAR OF EVENTS – June 2006

|           |         |         |   |
|-----------|---------|---------|---|
| Thursday  | June 1  | 8:00 PM | Erev Shavuot Services and Torah Study<br>Light candles at 8:24 PM.                  |
| Friday    | June 2  | 9:00 AM | Shavuot Morning Services  |
|           |         | 8:00 PM | Shabbat Evening Services<br>Light candles at 8:25 PM.                               |
| Saturday  | June 3  | 9:00 AM | Shavuot and Shabbat Morning Service with Yizkor                                     |
| Sunday    | June 4  | 9:00 AM | Service, Breakfast, Discussion  |
| Friday    | June 9  | 8:00 PM | Shabbat Evening Services<br>Light candles at 8:30 PM.                               |
| Saturday  | June 10 | 9:30 AM | Joint Shabbat Morning Service with Congregants from Beth Am at BHBI<br>Torah: Nasso |
| Sunday    | June 11 | 9:00 AM | Service, Breakfast, Discussion  |
| Monday    | June 12 | 7:30 PM | Board Meeting   |
| Wednesday | June 14 | 7:30 PM | Small Shul Collaborative Joint Torah Study Session at BHBI                          |
| Friday    | June 16 | 8:00 PM | Shabbat Evening Services<br>Light candles at 8:33 PM.                               |
| Saturday  | June 17 | 9:30 AM | Shabbat Morning Services<br>Torah: Behaalotchah                                     |
| Sunday    | June 18 | 9:00 AM | Service and Discussion  |
| Friday    | June 23 | 8:00 PM | Shabbat Evening Services<br>Light candles at 8:35 PM.                               |
| Saturday  | June 24 | 9:30 AM | Shabbat Morning Service<br>Blessing for the new month<br>Torah: Shelach             |
| Sunday    | June 25 | 9:00 AM | Service, Breakfast, Discussion  |
| Friday    | June 30 | 8:00 PM | Shabbat Evening Services<br>Light candles at 8:35 PM.                               |

### Please Note:

We are changing the timing and format of the monthly Small Shul Collaborative Joint Torah Study sessions. Beginning in June, the Torah study sessions will be held on the second Wednesday of each month at 7:30 p.m. at BHBI. We will start ‘at the beginning’ (literally) with Beresheit and will progress each month from where we left off until we have completed studying the entire Torah.

**THANK YOU TO OUR KIDDUSH SPONSORS  
FOR THE MONTH OF MAY**

|        |  |
|--------|--|
| May 6  | The Congregation   |
| May 13 | Janet Grable in honor of members with March, April and May birthdays and anniversaries |
| May 20 | Jill Clark in memory of her grandfather, Sam Gastel                                    |
| May 27 | The Congregation   |

**TO OUR DONORS -- THANK YOU FOR YOUR GENEROSITY!**

**TORAH FUND**

In memory of Larry Lutzky  
In memory of Michelle Blumkin  
Congratulations to Morris Herman  
Congratulations to Phil Mantel  
*Charles and Laura Levinson*

**RABBI AARON SOLOMON SCHOLARSHIP FUND**

Get well to Mae Cohen  
Mazel tov to Rabbi and Mrs. Henry Hyman on the birth of a new grandchild  
*Esther Solomon*

**SHAVUOT QUIZ**

Test your knowledge about Shavuot, then check your answers on Page 5.

1. Why is Shavuot known as Hag Matan Torateinu?
2. What do we count from Pesach to Shavuot?
3. What is read in the Torah Reading on the first day of Shavuot?
4. Which book do we read during services on the second day of Shavuot?
5. What do we traditionally eat on Shavuot?
6. What do we decorate our homes with on Shavuot?
7. Which famous Jewish king passed away on Shavuot?

# Yahrzeits

At the following Shabbat Services, we will read the names of our late loved ones whose Yahrzeits will occur on that Shabbat or during the following week.

| June 2-3          | Sivan | June 9-10            | Sivan  | June 16-17            | Sivan | June 24-25       | Sivan/<br>Tammuz |
|-------------------|-------|----------------------|--------|-----------------------|-------|------------------|------------------|
| Max Atkin*        | 8     | Janet Riwkin Glaser* | 14     | Sarah Rebecca Gerber* | 21    | Elsie Cohen      | 28               |
| Bessie Eber*      | 8     | Evelyn Goldman       | 17     | Minnie Marcus*        | 21    | Isadore Goldman* | 29               |
| Max Vogelstein    | 8     | Kauffman*            |        | Nathan Yablin*        | 21    | Hyb Jossem*      | 30               |
| Benjamin Weinrib* | 8     | Louis Maltinsky*     | 17     | Leo Lewin             | 22    | Gerald Braz      | 30               |
| Sarah Osband*     | 10    | Sadie Stolnitz*      | 17     | Fannie Warnick*       | 23    | Marion Bernstein | 2                |
| Jessie Stolnitz*  | 10    | Katherine Weinrib*   | 17     | Ada Gordon*           | 26    | Samuel Hoffman*  | 2                |
| Harry Strauss*    | 11    | Lyons I. Jossem*     | 18     | Stella Getz*          | 27    | Sara Sarachan*   | 2                |
| Minnie Strom*     | 11    | Zus Kaminnik         | 19     | Mary Goldman*         | 27    | Rose Joffe*      | 3                |
| Rose Sallerson*   | 13    | Esther Senzel*       | 20     | Betty Newell*         | 27    | Jennie Epstein*  | 4                |
|                   |       | June 30-July 1       | Tammuz | Louis Sanow*          | 27    | David Glasser*   | 4                |
|                   |       | Morris Krinsky*      | 7      | Eva Wasserman*        | 27    |                  |                  |
|                   |       | Sarah Shnitman*      | 9      |                       |       |                  |                  |
|                   |       | Rabbi Aaron          |        |                       |       |                  |                  |
|                   |       | Solomon*             | 9      |                       |       |                  |                  |
|                   |       | Eva Krinsky*         | 10     |                       |       |                  |                  |
|                   |       | Jael Stekel          | 10     |                       |       |                  |                  |
|                   |       | Phillip Morrow*      | 11     |                       |       |                  |                  |
|                   |       | Rochli Rothschild*   | 11     |                       |       |                  |                  |

\* Denotes name memorialized on BHBI Memorial Plaque

We pray that our mourners will be comforted among all the mourners of Zion and Jerusalem and that the memory of the deceased continues to be a blessing to all who knew them.

*Would you like to honor or remember a friend or loved one?  
Then why not sponsor one of our wonderful Shabbat kiddushim?  
Contact Aline Honickman at 271-5145 for more information.*



**Feldman**  
HEATING & COOLING

1776 East Main Street  
Rochester, NY 14609  
(585) 288-2050



Heating • Air Conditioning

*For over 90 years, the Feldman family has been providing quality, energy-saving heating & cooling*

SERVING THE JEWISH COMMUNITY  
FOR MORE THAN 50 YEARS



**PARSKY**  
MEMORIAL CHAPEL

*Proudly owned and operated by the Epstein family*  
1125 St. Paul Street • Rochester, NY • 583-423-0220



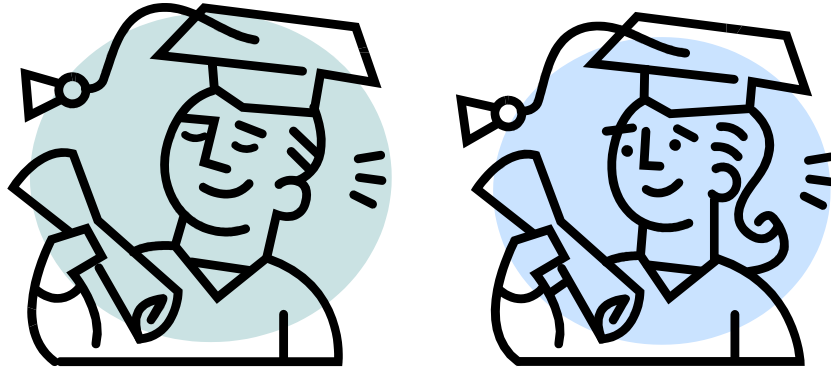
**BRIGHTON MEMORIAL CHAPEL, INC.**

Rochester's **ONLY** Locally Owned  
Jewish Funeral Home  
Jarrod M. Krieger, Owner  
3325 Winton Road South  
585-427-8520

Graveside, Temple or Chapel Services  
Compare facilities, locations and prices...  
There is **NO COMPARISON**  
[www.brightonmemorialchapel.com](http://www.brightonmemorialchapel.com)

## Congratulations to Our Graduates

Aviva Schaffer, who is graduating from Hillel Community Day School  
Matthew Honickman, who is graduating from Twelve Corners Middle School  
Noah Honickman, who is graduating from Council Rock Primary School  
Hanni Metlay, who is graduating from School #1



## Answers to the Shavuot Quiz

1. Shavuot commemorates the giving of the Torah on Mt. Sinai
2. The Omer
3. The Ten Commandments
4. The Book of Ruth
5. Dairy foods
6. Flowers and plants
7. King David

**So far our *TOPS* Gift Card fundraiser has been quite successful. Remember, *TOPS* Gift Cards are now available through BHBI in \$50 denominations.**

**To purchase *TOPS* Gift Cards, contact Stan Schaffer at 473-8072 or by e-mail at the [\\_schaffers@juno.com](mailto:_schaffers@juno.com)**

**Remember to check out our web site on the internet at:  
[www.BHBIRochester.org](http://www.BHBIRochester.org)**

**For fun, click on the Adon Olam songbook and see if you know all the Adon Olam melodies**

**OFFICE HOURS:** The shul office is checked regularly for mail and messages. The shul phone is 244-2060. For urgent issues, call Harris Honickman at 271-5145 or Stan Schaffer at 473-8072. You can also e-mail us at BHBI@frontiernet.net

**WANT TO REMEMBER OR HONOR SOMEONE OR A SPECIAL OCCASION?**

*Consider sponsoring a kiddush or make a donation to any one of our funds* (General Operating, Kiddush, Library, Torah, Rabbi Aaron Solomon Scholarship, Our Youth, Special Events, or the Sam Malina Memorial Fund) please indicate which fund you would like your donation to go to and we will send out an acknowledgement card as you indicate and print an announcement in this bulletin.

**BULLETIN CONTENT**

What do you enjoy reading in the BHBI Bulletin? Is there something that you would like added (or taken out)? If so, please let Stan Schaffer know. We always appreciate feedback.

**DID YOU MISPLACE YOUR BULLETIN?**

Don't worry. BHBI Bulletins going back several months can now be found on our web page: [www.BHBIRochester.org](http://www.BHBIRochester.org)

**WANT TO GET YOUR BULLETIN HOT-OFF-THE-PRESS?** Consider having us e-mail it to you! Contact Elaine or Stan Schaffer at: [the\\_schaffers@juno.com](mailto:the_schaffers@juno.com)

Congregation Beth Hamedresh-Beth Israel  
1369 East Avenue  
Rochester, NY 14610